



OVERVIEW OUR ADVANTAGES

- Low energy consumption
- Unique Vario push element system
- Liquid-tight
- Trouble-free dosing of a wide variety of substrates, even long-fibered
- Modular, extendable
- Interconnection with all common and popular downstream systems possible
- Customer care from start to finish
- Worldwide assembly, maintenance and service
- Customer service 365 days a year
- Highest quality „Made in Germany“



TERBRACK

MASCHINENBAU GMBH



OUR PRODUCT OVERVIEW



**VARIO
DOSINGCONTAINER**



**VARIO GO
SEACONTAINER**



**VARIO COMPACT
FOR SMALL APPLICATION**



VARIO FLOOR



VARIO DRYER



**FURTHER CONVEYER
TECHNIQUE**



**VARIO MOBILE
EMERGENCY
FEEDING
TEST MACHINE**



**VARIO TRUCK ACCEPTANCE
ALSO FOR SPECIAL SOLUTIONS
WE ARE YOUR RIGHT
PARTNER**

THE VARIO *DUO* DOSINGCONTAINER



UP TO 265 m³

YOUR PARTNER FOR CONVEYING, DOSING AND FEEDING

TERBRACK
MASCHINENBAU GMBH



Terbrack Maschinenbau GmbH
Wesker 30
GERMANY - 48691 Vreden
Tel.: +49 (0) 2564 394487 - 0
Fax: +49 (0) 2564 394487 - 99
Mail: technik@terbrack-maschinenbau.de

www.terbrack-maschinenbau.de

**MADE
IN
GERMANY**

www.terbrack-maschinenbau.de

STORAGE CONTAINER

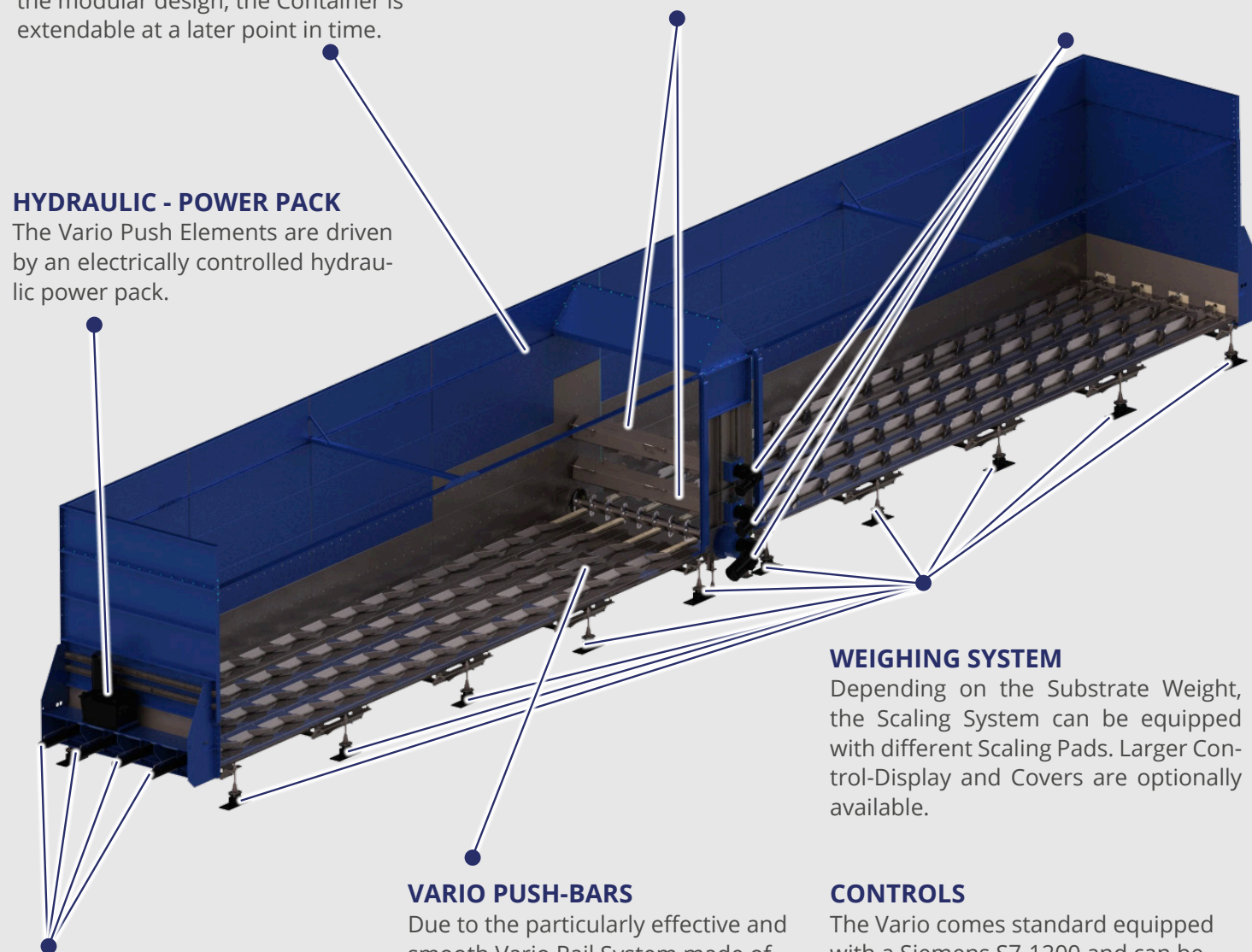
The Container is Liquid-tight. Due to the modular design, the Container is extendable at a later point in time.

DISSOLVING AUGER

The special design prevents the Dissolving Auger from getting wrapped with largefibrous material.

TRANSMISSION & ENGINE

We use planetary transmissions, which guarantee efficient performance and low wear. Also here, a dilution of oil and substrate is prevented by our dual sealing technique, too.



HYDRAULIC - POWER PACK

The Vario Push Elements are driven by an electrically controlled hydraulic power pack.

CYLINDRIC INPUT

Our hydraulic cylinders are equipped with a dualsealed piston rod. Substrate cannot enter the hydraulic system and in return, Oil cannot enter into the substrate.

VARIO PUSH-BARS

Due to the particularly effective and smooth Vario Rail System made of Steel or Stainless Steel and Poly Ethen, the Vario Push Bar technology is unique in the industry.

WEIGHING SYSTEM

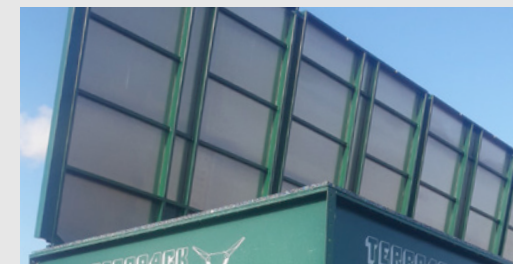
Depending on the Substrate Weight, the Scaling System can be equipped with different Scaling Pads. Larger Control-Display and Covers are optionally available.

CONTROLS

The Vario comes standard equipped with a Siemens S7-1200 and can be operated independently. The integration into a new or existing control system is possible.

FOR DIFFICULT AND LONG-FIBROUS SUBSTRATES „GRASS AND MUCK KIT 70 % AND 100 %“

In the standard configuration, the Vario Duo Dosingcontainer can reliably process up to 40% Grass and Muck. By adding additional components, you can increase the Grass and Muck Feed in two steps, to 70 % and all the way up to 100 %. These additional components can also be added at a later stage to the Vario.



HYDRAULIC COVER

In order to reduce emissions and bad weather conditions, the Vario Dosingcontainer can be equipped with a hydraulic cover controllable via remote control.

OVERCHARGE PROTECTION

The overcharge protection increases the volume of the Vario Dosingcontainer by approx. 10 %. It prevents loading of substrate over the edge of the container, so the environment of the Vario Dosingcontainers kept much cleaner. (The overload protection can't be combined with a hydraulic lid)



INSPECTION CHAMBER

To facilitate maintenance, we optionally offer an inspection chamber with safety switch on.

WEIGHING SYSTEM

Our weighing system includes an large well readable display. In combination with the Vario control -system we ensure accurate dosing of the substrate. The weighing system can be extended with a component selection via remote control.

The weighing legs can also be protected by covers. Optionally, all values can be forwarded via Profinet or Profibus to a superordinate control unit.



SPECIAL PAINT

The standard color for the steel parts on the Vario is moss green (RAL 6005). The standard color for the stainless steel parts on the Vario is gray (RAL 9006).



ADDITIONAL COMPONENTS

- Vario in partial stainless steel
- Vario in full stainless steel
- Vario in steel (for non-corrosive substrate)
- Vario with underframe
- Discharge direction left, right or center
- Grass & Muck Package 70% and 100%
- Remote access module
- Load-dependent control
- Interconnection with all common and popular downstream systems possible